

**Nowoczesne systemy ogrzewania**



**Moderator**

*TRY US  
OUT!*

[www.moderator.com.pl](http://www.moderator.com.pl)



**THIS WAS THEN...**



**THIS IS NOW**



***Boilers functioning to this day are a reminder of those times***



A Moderator boiler operating  
in Sokołów Podlaski.

**23 years of trouble-free use!**

This boiler was manufactured in 1989  
and replaced with a new unit only last  
year.

Moderator is the no. 1 producer of boilers in Poland. For 40 years, with passion and commitment we have been developing technologies for producing energy, bearing in mind people and nature, of which we are a small part. Our company is located next to Europe's largest ancient forest complex - the Białowieża forest. Having such a neighbour is a commitment. We appreciate its natural beauty and wish it remained in its shape for future generations

Thanks to unique design solutions our devices are able to transform, with the utmost efficiency, **any type of fuel** into **cheap** energy. The versatility of our boilers and their quality, stemming from years of experience, has been recognized by thousands of satisfied Customers in Poland and almost every country in Europe, and in some quite exotic corners of the world.

The goal, which we successfully pursue, is to **maximally satisfy the needs of each** of our customer. We care about the **comfort and safety** of the users of our products. Our conduct is guided by humanitarian principles - we help those who suffer, are vulnerable, or who simply are in need of support and aid from a fellow man. We cooperate with several non-profit organizations by providing them with our products free of charge, in order to heat the facilities where they do their charity work.

We are well aware of the importance of the **warmth and comfort of home**,  
which all of us needs - **WE** can **guarantee** this warmth.

We are immensely happy to present to you the **Newest Product Catalogue** of Moderator Sp. z o.o. in **Hajnówka**. You are invited to journey across the land of devices, whose main purpose is to utilize energy in an environmentally **friendly and effective manner**. We believe that our **NEW OFFER** will find your interest and meet any of your needs





The **UNICA** model is a low-temperature water heating boiler with a triple draft combustion chamber system, ensuring high efficiency and constant combustion. It is characterised by its **high versatility in burning various types of solid fuels**



UP TO 5 YEAR  
WARRANTY



MECHANICAL  
MOVING  
GRATE



BOILER  
EFFICIENCY 81%



BURNS  
VARIOUS  
FUELS



LARGE  
COMBUSTION  
CHAMBER



WATER GRATES



WIDE LOAD  
DOOR



UNIVERSAL  
INSTALLATION  
MOUNTING



EASY ACCESS  
FOR CLEANING



POSSIBLE  
ADDITION OF  
BLOWER  
SYSTEM OR  
DRAFT  
REGULATOR

Model: UNICA	7	12	18	24	46
Efficiency (%)	78 – 81				
Water volume(l)	29	43	51	83	180
Boiler mass (kg)	139	170	198	254	429
Load chamber volume (dm³)	37,3	44,3	55	87	180
Working temp. of heating water (°C)	70 – 80				
Min. temp. of return water(°C)	55				
Working pressure(bar)	max. 1,5				
Power supply (V)	230				
Max. log length (cm)	30	38			53
Load hatch diameter (cm)	22 x 31,5		22 x 39		
Chimney height (m)	8 – 10				
Min.chimney diameter(cm² / Ø mm)	225/150			300/180	400/200
Max. length (cm)	101	113	113	132,5	147
Max. width (cm)	53,5	53,5	61	61	76
Max. height (cm)	73	77,5	77,5	90	106,5
Flue diameter (cm)	14 x 16			15 x 20	20 x 20

### Type series 7-46 kW

- **Fuel:** nut hard coal, seasoned wood up to 30% moisture, hard coal(70%) coal dust (30%) mixture
- **Optional:** blower system or draft regulator
- **Efficiency:** 78–81%
- **Warranty:** up to 5 years







# UNICA *Sensor*



## 10 – 60 kW



The **UNICA SENSOR** is a low temperature water heating boiler with a steel frame. Triple chamber design of the heat exchanger allows **highly effective combustion of various types of fuels**. The boiler utilizes a directional separation of air into primary and secondary air, which has a significant influence on its operating costs and environmental impact.



UP TO 5 YEAR  
WARRANTY



DOUBLE  
AIR  
SEPARATION  
IN FIRE-  
PIT



ATTESTER  
BOILER  
STEEL  
(5 and 6 mm)



MODERN  
MULTI-  
FUNCTIONAL  
CONTROLLER



HIGH  
EFFICIENCY  
- 84%



EASY  
CLEANING  
ACCESS



LARGE  
COMBUSTION  
CHAMBER



HIGH  
BURNING  
STABILITY



WIDE  
LOAD  
HATCH



FLUE GAS  
TEMP.  
SENSOR  
- OPTIONAL

Model: UNICA Sensor	10	15	20	25	30	40	50	60
Power (kW)	10	15	20	25	30	40	50	60
Efficiency (%)	84							
Water volume (l)	40	61	78	90	105	120	135	155
Boiler mass (kg)	186	214	259	283	330	391	429	466
Load chamber volume (dm³)	43	61	66	88	120	154,5	179,5	204,5
Working temp. of heated water (°C)	70 – 80							
Min. temp. of return water(°C)	55							
Working pressure (bar)	max. 1,5							
Power supply (V)	230							
Max. log length(cm)	31	38	38	38	45	45	53	60
Charge hatch diam. (cm)	22x31,5	22 x 39						
Chimney height(m)	8 – 10							
Min.chimney diameter (cm² / Ø mm)	324/180		400/240			625/280		
Max. length (cm)	114,5	115,5	128	132	132,5	145,5	145,5	145,5
Max. width (cm)	49,5	57	57	57	64,5	64,5	72	79,5
Max. height (cm)	83,5	94,5	94,5	105,5	106	117,5	117,5	117,5
flue diameter (cm)	14 x 16	Ø 16	Ø 18			20 x 20		

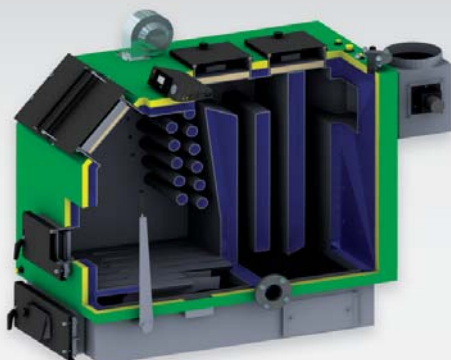
### Type series 10-60 kW

- **Fuel:** nut hard coal. seasoned wood (30% moisture)  
hard coal(70%) coal dust (30%) mixture
- **Equipment:** cleaning kit, thermometer, ember safety grille,  
moving grate lever, ash drawer (10-26 kW)
- **Efficiency:** 84%
- **Warranty:** up to 5 years



More information at  
[www.moderator.com.pl](http://www.moderator.com.pl)

Service hotline active 24h per day, 7 days a week



The **UNICA Max** is an upper combustion boiler. It is made of high quality boiler sheet metal. This is a manually loaded boiler characterized by a very large combustion chamber and a wide loading door, which allows burning large pieces of wood. The boiler comes with an ecoMax 200 regulator with blowing fan, combustion gas suction fan in the flue, and a flue gas temperature sensor. UnicaMax can work with the SMOK feeder intended for burning biomass



ATTESTED  
BOILER  
STEEL- 6 MM



HIGH  
BURN  
STABILITY



BOILER  
EFFICIENCY 80%



MODER  
MULTIFUNCTIONAL  
CONTROLLER  
FEATURING  
FUZZY LOGIC



LARGE  
COMBUSTION  
CHAMBER



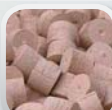
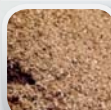
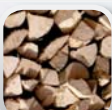
FLUE GAS  
SUCTION  
FAN



WIDE LOAD  
HATCH



DOUBLE  
SEPARATION  
OF AIR  
IN COMBUSTION  
CHAMBER



Model: UNICA Max	80	100	120	160
Efficiency (%)	80			
Water volume (l)	365	410	455	500
Boiler mass (kg)	985	1067	1145	1231
Load chamber volume(dm³)	366	429	492	555
Working temp. of heated water (°C)	70 – 80			
Min. temp. of return water(°C)	55			
Working pressure (bar)	max. 1,5			
Power supply (V)	230			
Max.log length(cm)	57	67	77	87
Load hatch diameter(cm)	32,8 x 58,8			
Chimney height (m)	8 – 10			
Min. chimney diameter(cm² / Ø mm)	900/350			
Max. length (cm)	214			
Max width(cm)	88,8	98,8	108,8	118,8
Max. Height (cm)	157			
Return stub height (cm)	30,6			
Flue diameter (cm)	Ø 28			
Load chamber hatch height from the base of the boiler(cm)	113,8			

### Type series 80-160 kW

- **Fuel:** hard coal, seasoned wood, chips, sawdust (up to 30% moisture)
- **Equipment:** suction fan in the flue, thermometer, controller, supply fan, cleaning kit, moving grate lever
- **Efficiency:** 80%
- **Warranty:** 3 years



# UNICA<sup>Max</sup>



## 200 – 300 kW



The **UNICA Max** is an upper combustion boiler. It is made of high quality boiler sheet metal. This is a manually loaded boiler characterized by a very large combustion chamber and a wide loading door, which allows burning large pieces of wood. It comes with an electronic controller and a blower fan. Unica Max can work with the SMOK feeder for biomass combustion



ATTESTED  
BOILER  
STEEL  
6 –  
MM



HIGH BURN  
STABILITY



BOILER  
EFFICIENCY 80%



MODER  
MULTI-  
FUNCTIONAL  
CONTROLLER  
FEATURING  
FUZZY LOGIC



LARGE  
COMBUSTION  
CHAMBER



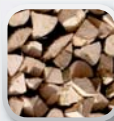
EASY  
CLEANING  
ACCESS



WIDE  
LOAD  
HATCH



BURNS  
VARIOUS  
FUELS



Model: UNICA Max	200	250	300
Efficiency (%)	76 – 80		
Water volume (l)	900	1500	1700
Boiler mass (kg)	1400	2000	2400
Load chamber volume (dm <sup>3</sup> )	645	968	1097
Working temperature of heating water (°C)	70 – 80		
Min. temp. of return water (°C)	55		
Working pressure (bar)	max. 1,5		
Power supply (V)	230		
Max.log length (cm)	97	120	120
Load hatch diameter (cm)	43 x 89		
Chimney height (m)	8 – 10		
Min. chimney diameter (cm <sup>2</sup> / Ø mm)	1600/450		
Max. length (cm)	260		
Max. width (cm)	141	189	209
Max. height (cm)	165		
Min. width (cm)	125	170	190
Flue diameter (cm)	40 x 40		
Return stub height (cm)	45		

### Type series 200-300 kW

- **Fuel:** hard coal, seasoned wood (up to 30% moisture), briquette hard coal(70%) coal dust (30%) mixture, chips, sawdust (30%moist.)
- **Equipment:** thermometer, controller, cleaning kit, supply fan, moving grate lever
- **Efficiency:** 76-80%
- **Warranty:** 3 years



### GREEN LINE



The **VENTO EKO** boiler is an automated device for highly effective burning of pellets, pea coal, and coal dust. This modern retort burner system features a full reverse function (capable of reversing the feeder) and a security system preventing smoke from going to the hopper. The boiler can be mounted with a cast iron grate (included) allowing to burn other types of fuels such as wood, coal, briquette. The set includes a complimentary smoke detector for the boiler room.



UP TO 6 YEAR  
WARRANTY



CAPABLE OF MANUAL  
BURNING  
- CAST IRON GRATE  
INCLUDED



ATTESTED STEEL  
6 –  
MM



DOUBLE  
PROTECTION FROM  
FUEL IGNITION  
IN CONTAINER



HIGH  
BOILER  
EFFICIENCY  
Y - 85%



FEEDER SCREW  
WITH BACKWARD  
COIL



MODERN  
MULTIFUNCTIONAL  
CONTROLLER  
FEATURING  
FUZZY LOGIC



FUEL CONTAINER  
VOLUME: 310 DM<sup>3</sup>



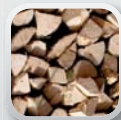
HIGHLY EFFECTIVE  
RETORT BURNER



AUTOMATIC  
ASH REMOVAL  
SYSTEM-  
OPTIONAL

Model: VENTO EKO	15	20	25
Effectiveness (%)	85		
Water volume (l)	67	80	95
Device mass (kg)	373	433	498
Fuel container volume (dm <sup>3</sup> )	310		
Heating water working temp. (°C)	70 – 80		
Min. temp. of return water (°C)	55		
Working pressure (bar)	max. 1,5		
Power supply (V)	230		
Max. log length (cm)	31		
Load hatch diameter (cm)	17,8 x 31,3		
Chimney height (m)	8 – 10		
Min. chimney diameter (cm <sup>2</sup> / Ø mm)	324/180	400/200	
Max. length (cm)	82	94	106
Max width (cm)	139		
Max. height (cm)	149,5		
Exchanger width (cm)	51		
Flue diameter (Ø mm)	160		

Service hotline active 24h per day, 7 days a week



#### Type series 15-20-25 kW

- **Automatic burning fuel:** 6-8 mm pellets, eko pea coal (5-25 mm), coal dust
- **Manual burning fuel:** nut hard coal, seasoned wood up to 30% moisture, briquette
- **Equipment:** cast iron grate (incl.), ash drawer, cleaning kit, smoke detector
- **Efficiency:** 90%
- **Warranty:** up to 6 on exchanger tightness and 2 years on other elements (see manual for details)





# VENTO<sup>Bio</sup>



## 15-20-25 kW

### GREEN LINE



The **VENTOBIO** boiler is a universal solid fuel burning set for automatic and manual load. Users of this set, depending on their needs, have the possibility to burn pellets fully automatically, or they can manually burn fuels such as wood, briquette or coal (emergency mode)

The set has four main elements:

- boiler
- pellet burner with a moving grate and igniter
- fuel feeding system with control
- pellet container



**ATTESTED STEEL**  
6 – MM



**CAPABLE OF MANUAL BURNING**  
CAST IRON GRATE INCLUDED



**HIGH BOILER EFFICIENCY 91%**



**PELLET CONTAINERS**  
VOLUMES FROM 0,4 M<sup>3</sup> TO 1,2 M<sup>3</sup>



**ECONOMICAL COMBUSTION**  
THANKS TO MODERN BURNER



**FUEL CONTAINER**  
MAY BE PLACED ON EITHER SIDE OF THE BOILER



**MODER BURNER**  
FEATURING AUTOMATIC IGNITER



**BURNS VARIOUS FUELS**



**MODER BURNER**  
WITH SELF-CLEANING FIREPLACE



**AUTOMATIC ASH REMOVAL SYSTEM** – OPTIONAL

Model: VENTO BIO	15	20	25
Efficiency (%)	91		
Water volume(l)	67	80	95
Device mass (kg)	333	393	458
Fuel container volume (m³)	0,4 – 1,2		
Working temp. of heating water(°C)	70 – 80		
Min. temp. of return water (°C)	55		
Working pressure(bar)	max. 1,5		
Power supply (V)	230		
Max. log length (cm)	31		
Load hatch diameter (cm)	17,8 x 31,3		
Chimney height (m)	8 – 10		
Min. chimney diameter(cm² / Ø mm)	324/180	400/200	
Length* (cm)	108,5	120,5	132,5
Width* (cm)	97		
Height* (cm)	147,5	149,5	
Exchanger width (cm)	49		
Flue diameter (Ø mm)	160		180

\*for 0,4m<sup>3</sup> fuel container

### Type series 15-20-25 kW

- **Automatic burning fuel:** 6-8 mm pellets,
- **Fuel for manual burning:** nut hard coal, seasoned wood up to 30% moisture, briquette
- **Equipment:** cast iron grate (incl), ash drawer, cleaning kit, automatic ash removal system (optional)
- **Efficiency:** 91%
- **Warranty:** Up to 6 years on exchanger tightness and 2 years on other elements (see manual for details)



More information at  
[www.moderator.com.pl](http://www.moderator.com.pl)

Service hotline active 24h per day, 7 days a week

### GREEN LINE

The **VENTO Multi** boiler is a modern device intended for burning biomass (sawdust, chips, shavings, but also pellets and briquette). It consists of an exchanger, feeding system, **head with moving grate for fuel combustion**, and container. The set's unique design allows unattended operation, high efficiency, as well as low emissions in accordance to the EN303-4 norm. VentoMulti features advanced technology which goes beyond economy both in heating and ecology.



<b>Model:</b> VENTO Multi	<b>20</b>
Efficiency (%)	86
Water volume (l)	80
Boiler mass (kg)	587
Fuel container volume(dm³)	600 / 1000
Heating water working temperature(°C)	70 – 80
Min. temp. of return water(°C)	55
Working pressure(bar)	max. 1,5
Power supply (V)	230
Max.log length (cm)	31
Load hatch dimension(cm)	17,8 x 31,3
Chimney height (m)	8 – 10
Min. chimney diameter (cm² / Ø mm)	324/180
Max. length (cm)	113,1
Max. width (cm)	200,2
Max. height (cm)	157,5
Exchanger width (cm)	51
Flue diameter(Ø mm)	160
Return stub height (cm)	12,5



UP TO 6 YEAR WARRANTY



CAPABLE OF MANUAL BURNING  
-CAST IRON GRATE INCLUDED



ATTESTED STEEL 6 – MM



FUEL CONTAINER MAY BE PLACED ON EITHER SIDE OF THE BOILER



CAST IRON HEAD WITH MOVING GRATE



MODERN MULTIFUNCTIONAL CONTROLLER



EFFECTIVE BURNING OF VARIOUS TYPES OF BIOMASS



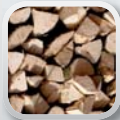
DOUBLE PROTECTION FROM FUEL IGNITION IN THE CONTAINER



FUEL CONTAINERS VOLUMES:  
0,6 M³ – 1 M³



AUTOMATIC ASH REMOVAL SYSTEM  
- OPTIONAL



#### Type series 20 kW

- **Fuel for automatic burning:** VENTO MULTI is adapted for burning fragmented renewable wood- and plant-based fuels (p45 chips, certain types of sawdust, bark turf, briquette with bulk density up to 450kg/m³, pellets) with relative moisture not exceeding 25%.
- **Fuel for manual (emergency) burning:** nut hard coal, seasoned wood (up to 30% moisture), briquette
- **Equipment:** cast iron grate (incl.), thermomanometer, controller, cleaning kit, automatic ash removal system(optional)
- **Efficiency:** 86%
- **Warranty:** up to 6 years on exchanger tightness and 2 years on other elements (see manual for details)

## 15 – 60 kW

The **UNICA Sensor Bio** boiler is a universal solid fuel burning set for automatic and manual load. Users of this set, depending on their needs, have the possibility to burn pellets fully automatically, or they can manually burn fuels such as wood, briquette or coal.

The set has four main elements:

- boiler
- pellet burner with a moving grate and igniter
- fuel feeding system with control
- pellet container



ATTESTED  
STEEL  
5 AND  
6MM



INCLUDES  
2 CONTROLLERS  
(BURNER AND  
BOILER)



HIGH  
BOILER  
EFFICIENCY 91,5%



EASY ATTACH-  
MENT AND  
DETACHMENT  
OF BURNER



ECONOMICAL  
COMBUSTION  
THANKS TO  
MODERN BURNER



PELLET  
CONTAINERS  
VOLUMES  
FROM 0,4 M<sup>3</sup>  
TO 1,2 M<sup>3</sup>



MODERN  
BURNER  
FEATURING  
AUTOMATIC  
IGNITER



CONTAINER  
MAY BE PLACED  
ON EITHER SIDE  
OF THE BOILER



MODERN  
BURNER  
WITH SELF-  
CLEANING  
FIREPLACE



BURNS  
VARIOUS  
FUELS

Model: UNICA Sensor Bio	15	20	25	30	40	50	60
Efficiency (%)	91,5						
Water volume(l)	61	78	90	105	120	135	155
Boiler mass (kg)	214	259	283	330	391	429	466
Load chamber volume (dm <sup>3</sup> )	61	66	88	120	154,5	179,5	204,5
Working temp. of heating water(°C)	70 – 80						
Min. temp. of return water(°C)	55						
Working pressure (bar)	max. 1,5						
Power supply(V)	230						
Load hatch diameter(cm)	22 x 39						
Chimney height (m)	8 – 10						
Min.chimney diameter (cm <sup>2</sup> / Ø mm)	324/180		400/180		625/280		
Max. length (cm)	145	157	161	161	175	175	175
Max. width(cm)	57	57	57	64,5	64,5	72	79,5
Max. height (cm)	140						
Flue dimensions (cm)	Ø 16		Ø 18		20 x 20		
Min. width of set	105	105	105	112	112	120	140

### Type series 15-60 kW

- **Fuel:** pellets, nut hard coal, seasoned wood up to 3-% moisture, hard coal (70%) coal dust (30%) mixture
- **Equipment:** cleaning kit, thermometer, ember protection grille, moving grate lever, ash drawer (15-25 kW)
- **Efficiency:** 91,5%
- **Warranty:** Up to 5 years on exchanger tightness and 2 years on other elements (see manual for details)





The **COOKER BOILER** is a dual purpose device intended for heating water up to a max. of 90°C in central heating and domestic hot water installations. At the same time, during the heating process it is also possible to use the second available function, mainly the cooker top, for preparing meals on a live flame, using conventional kitchen ware (pots, pans, kettles).



**VERY EASY TO USE**



**SUMMER/WINTER  
FUNCTIONS**



**SENSATIONALLY  
LOW PRICE**

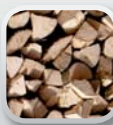


**SMALL SIZE**



**MULTIPURPOSE  
-CENTRAL  
HEATING + HOT  
WATER + COOKER**

Model: COOKER BOILER	3 – 5	10
Power (kW)	up to 5	up to 10
Water volume(l)	20	25
Allowed working pressure (bar)	1,5	
Main fuel	wood	
Secondary fuel	hard coal	
Burning stability (h)	2 – 4	4 – 6
Flue diameter (cm)	15	
Required chimney height(m)	6	
Approx.heating surface (m <sup>2</sup> )	up to 50	up to 100
Weight (kg)	94	120
Height(mm)	728	761
Width (mm)	337	337
Depth (mm)	813	944



### Type series 3-10 kW

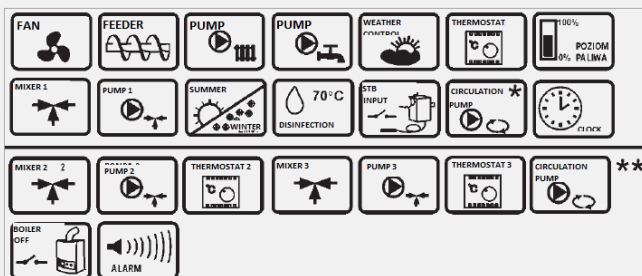
- **Fuel:** Nut hard coal, seasoned wood up to 30% moisture
- **Equipment:** cast iron grate
- **Warranty:** 2 years



ST-81



ecoMAX 800 FUZZY LOGIC



\*\* - Features available in MX.01 expansion module

ecoMAX 200 FUZZY LOGIC

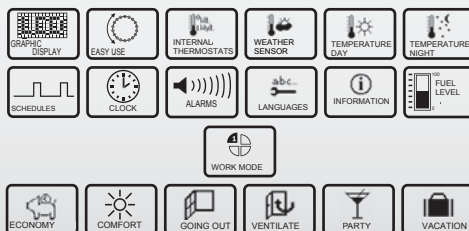


Room panel EcoSTER 200



• remote control from room

• fuel level information





Leader in new technologies

**Leader in  
biomass  
burning**

## SMOK - Automatic Biomass Burning Set

Moderator Sp. z o.o. is the Polish leader in the manufacture of biomass burning devices. Our years of experience and cooperation with Scandinavian experts give us the opportunity to offer you a wide range of modern products. Our offer assumes the use of renewable energy sources - biomass - in order to produce heat for houses or industrial buildings.

We offer you the renowned in Europe Automatic Biomass Burning Sets - SMOK. The devices come in powers ranging from 30 to 240 kW. They are intended for burning various types of biomass, such as sawdust, chips, shavings, briquette, pellets, or grains and fruit seeds. To burn such diverse fuels effectively, we use cast iron and ceramic heads. The clients may select in fuel containers ranging from 0.6 m<sup>3</sup> to as much as 27 m<sup>3</sup>. We also offer spring reels for individual covering.

More info at [www.moderator.com.pl](http://www.moderator.com.pl). Visit us!



*On behalf of the Board and Employees of Moderator, I would like to thank you for your interest in our New Catalogue.*

*I hope that in our wide offer you have found products that meet your needs.*

*You are more than welcome to contact our Sales Department.*

*We are at your disposal!*

*Mariusz Kubacki*

*– President of the Board*

**We have gained the trust of many European countries:**



GREAT BRITAIN IRELAND



GERMANY



FRANCE



BELGIUM



LUXEMBURG



HOLLAND



SPAIN



PORTUGAL



SLOVAKIA



CZECH REP.



SLOVENIA



HUNGARY



AUSTRIA



SWITZERLAND



RUSSIA



LITHUANIA



LATVIA



ESTONIA



UKRAINE



MOLDOVA



BELARUS



KAZAKSTAN



NORWAY



SWEDEN



FINLAND



GREECE



**Moderator**

**MODERATOR Sp. z o.o.**

17-200 Hajnówka  
ul. 11-go Listopada 16A

**SALES DEPARTMENT:**

**Open hours:**

Mon - Fri: 7.00 – 17.00

Saturday: 8.00 – 14.00

tel.: +48 85 682 75 20

+48 85 682 75 25

fax: +48 85 682 75 29

e-mail: [biuro@moderator.com.pl](mailto:biuro@moderator.com.pl)

MODERATOR SP. Z O.O. PRODUCTS DISTRIBUTOR

Due to constant improvement and modernization of our products, the technical specification of the devices we manufacture may differ from this catalogue. This catalogue is not a trade offer, it is purely informational.